

20 GILLINGHAM STREET, LONDON

Red.



£1,800 PER MONTH

New to the market is this stylish one-bedroom apartment! With its open-plan living area, double bedroom with built-in wardrobes, and large bathroom, this property offers everything you need for a cosy home and convenient lifestyle.

Wilton Plaza is a sought-after modern development with a day porter, two lifts, CCTV, and communal gardens. Residents also enjoy excellent transport links to Victoria Station within a few minutes walk. Additionally, Nova Victoria is just moments away, offering an extensive range of shops and eateries. The area boasts many gyms, bars, and restaurants.



Gillingham Street

Red.



Approximate Gross Internal Area
456 sq ft / 42.4 sq m

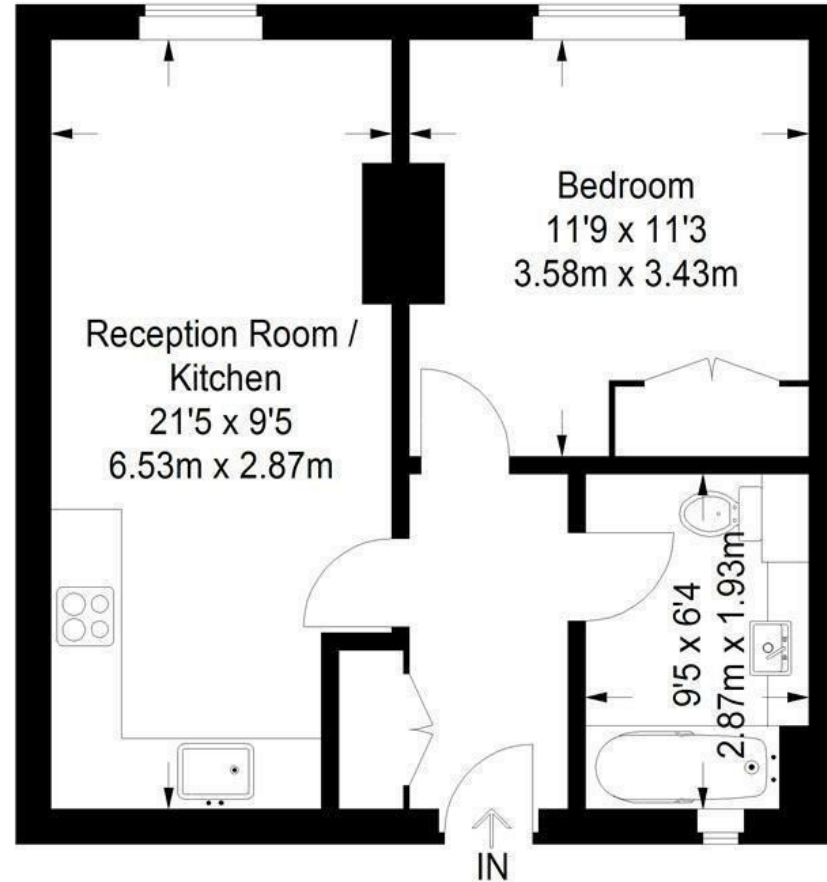


Illustration for identification purposes only,
measurements are approximate, not to scale.

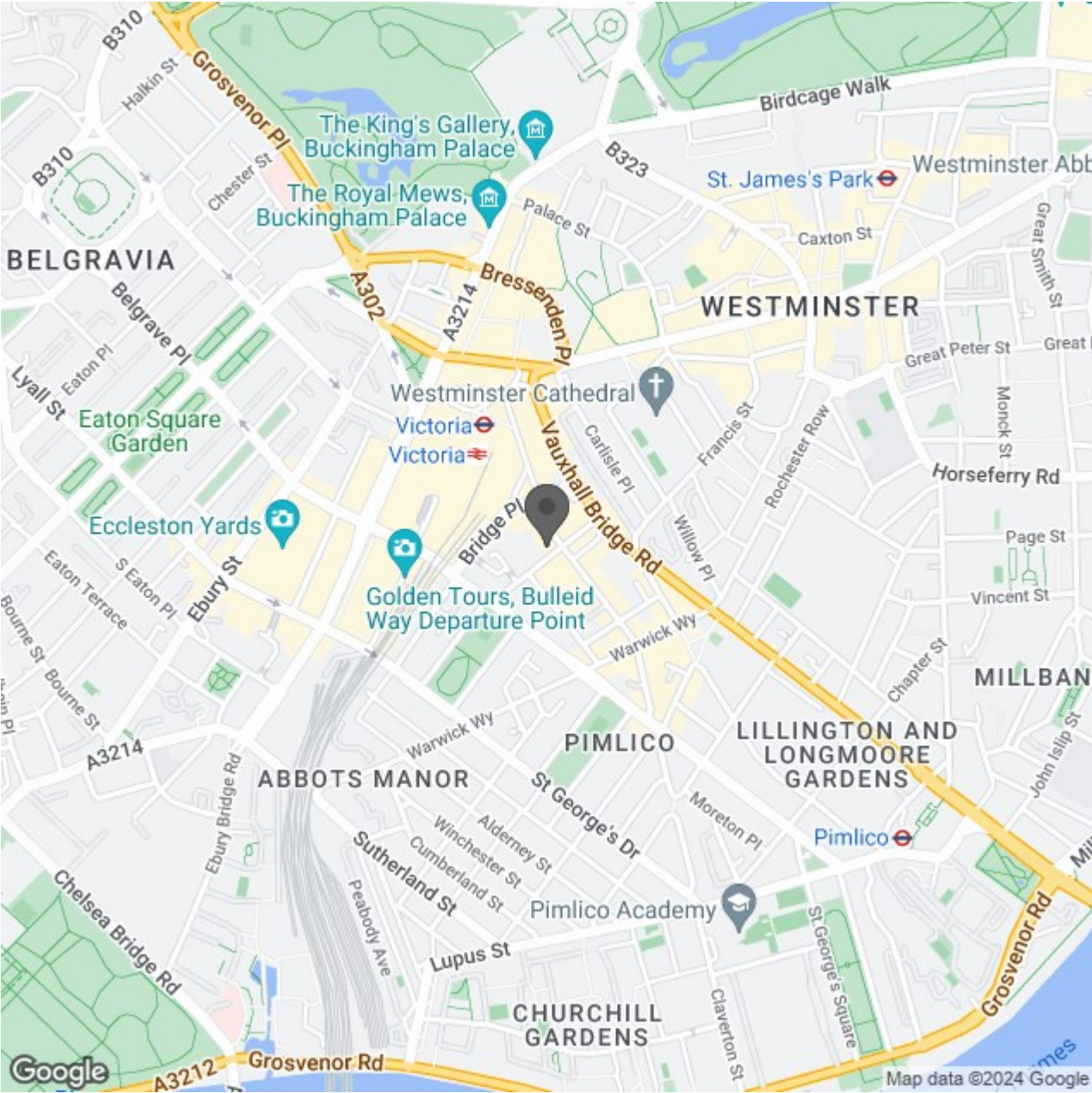


Energy Efficiency Rating

	Current	Potential
Very energy efficient - lower running costs		
(92 plus) A		
(81-91) B		
(69-80) C		
(55-68) D		
(39-54) E		
(21-38) F		
(1-20) G		
Not energy efficient - higher running costs		
England & Wales	EU Directive 2002/91/EC	

Environmental Impact (CO₂) Rating

	Current	Potential
Very environmentally friendly - lower CO ₂ emissions		
(92 plus) A		
(81-91) B		
(69-80) C		
(55-68) D		
(39-54) E		
(21-38) F		
(1-20) G		
Not environmentally friendly - higher CO ₂ emissions		
England & Wales	EU Directive 2002/91/EC	



Red.